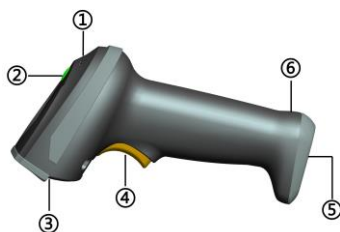


條碼掃描器快速指引 Image Barcode Scanner Quick Guide

- A standard packing includes a scanner, a USB cable and a quick guide.
- Use a piece of dry and soft cloth when cleaning the scanner is in need.
- 掃描器的工作電壓是 5VDC，在連接掃描器與設備前，請檢查電源的額定電壓。
- 每套掃描器標準配置包括：掃描器一支、USB 電纜線一條、《快速指引》一份。
- 清潔條碼讀取窗上的汙漬和灰塵時，推薦使用鏡頭拭紙，輕輕擦拭。

掃描器外觀圖

Parts of the scanner



- | | |
|------------------------------|-----------|
| ① Beeper | ① 蜂鳴器 |
| ② LED | ② LED 指示燈 |
| ③ Exit window | ③ 條碼讀取視窗 |
| ④ Trigger | ④ 按鍵 |
| ⑤ RJ-45 phone jack connector | ⑤ RJ45 接口 |
| ⑥ Release-hole of the cable | ⑥ 電纜線拆除孔 |

連接電線方式

Installing the cable

1. Refer to the below picture to connect the host with the scanner.
2. Ensure that all connections are secure.
3. If the installation is successful, the beeper will beep and LED will light.



1. 請參考下圖，連接設備和掃描器。
2. 檢查連接是否正確，連接處是否穩固。
3. 打開設備電源，如連接正確，掃描器的蜂鳴器和 LED 燈會發出聲光提示。

掃描方式

Reading techniques

1. Press and hold the trigger, the scanner projects a green-squared LED which allows positioning the barcode within its field of view, and turns on the white LED for illumination.
2. When reading a barcode, the green-squared LED will be smaller when the scanner is closer to the barcode and larger when it farther from the barcode. Please hold the scanner at an appropriate distance from the barcode, and center the green-squared LED on the barcode.
3. On a successful barcode reading, the scanner will beep once, and the green-squared LED and white LED will be turned off temporarily. Then the scanner transmits barcode data to the host.

1. 按住掃描器按鍵，掃描器會投射出一個瞄準條碼用的綠色方塊，並同是開起白色照明燈。
2. 掃描條碼時，綠色指示方塊會隨著掃描器靠近條碼而縮小、遠離條碼而變大。請移動掃描器和條碼到一個適合讀取的距離，且綠色指示方塊應在條碼的中心位置。
3. 若讀取成功，掃描器會發出一聲"啾"聲響，綠色指示方塊與白色照明燈會暫時熄滅，並同時將條碼資料傳輸給主機。



邁多科技 www.LAAB.com.tw 02-2389-0101

1987年成立，條碼機/讀碼器/貼紙/吊牌/碳帶、代理/代印生產、維修/規劃諮詢

Godex International

infoGT@godexintl.com
+886-2-2225-8580
13F, No.168, Jian-Kang Rd,
Zhonghe Dist,
New Taipei City 235,
Taiwan

Godex Americas

infoGA@godexintl.com
+1-805-987-5100
3963 Camino Ranchero,
Camarillo, California 93012,
United States

Godex China

infoGC@godexintl.com
+86-21-5665-1313
3F, No.303
Jiang Chang 3 Road
Shanghai, China

Godex Europe

infoGE@godexintl.com
+49-2195-59599-0
Industriestraße 19
42477 Radevormwald,
Germany

Note: 1. More details refer to User Manual, please visit: www.godexintl.com; 2. For better readability, please print this document with laser printer.

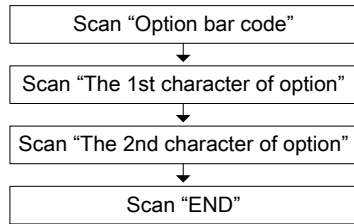
註: 1.詳細內容請參閱《使用者手冊》，下載網址 www.godexintl.com；2.為確保條碼品質，請使用雷射印表機進行列印

回復出廠設定與顯示版本資訊

Return default parameters and version information

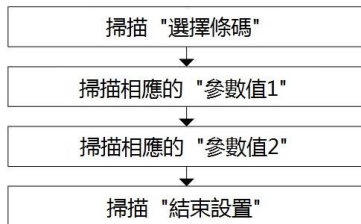


Programming instruction



Example: To set **Flow control** to be XON/XOFF

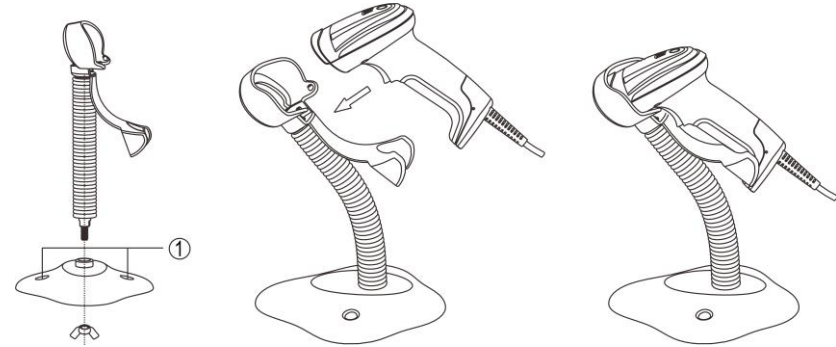
一般參數設定流程圖



示例: 設置**流量控制**模式為 XON/XOFF

支架安裝示意圖

Assembling the stand



Note: The stand is an optional accessory.

1. Follow above steps and tighten the screw.
2. Bend the neck to the desired position for scanning.
3. Screw mounting: Screw #10 wood screw into each screw-mount-hole① until the base of the stand secured.

注意：支架為選配件

1. 按上圖所示裝配好支架。
2. 彎曲蛇形支架管到合適的角度以便進行掃描。
3. 如需將支架固定到桌面，可用兩根 #10 螺絲穿過預留的螺絲孔（圖中①處）進行固定。

設備名稱: 條碼掃描器	型號 (型式): GS520					
Equipment name: Barcode Scanner	Type designation (Type): GS520					
單元 Unit	限用物質及其化學符號 Restricted substances and its chemical symbols					
	鉛Lead (Pb)	汞Mercury (Hg)	鎘Cadmium (Cd)	六價鉻Hexavalent chromium (Cr ⁶⁺)	多溴聯苯 Polybrominated biphenyls (PBB)	多溴二苯醚 Polybrominated diphenyl ethers (PBDE)
引擎頭	○	○	○	○	○	○
接口板	○	○	○	○	○	○
數據線	○	○	○	○	○	○
遮光片	○	○	-	○	○	○
頂蓋	○	○	○	○	○	○
手柄	○	○	○	○	○	○
底座	○	○	○	○	○	○
備考1. "超出0.1 wt%"及"超出0.01 wt%"係指限用物質之百分比含量超出百分比含量基準值。 Note 1: "Exceeding 0.1 wt%" and "exceeding 0.01 wt%" indicate that the percentage content of the restricted substance exceeds the reference percentage value of presence condition.						
備考2. "○"係指該項限用物質之百分比含量未超出百分比含量基準值。 Note 2: "○" indicates that the percentage content of the restricted substance does not exceed the percentage of reference value of presence.						
備考3. "-"係指該項限用物質為排除項目。 Note 3: The "-" indicates that the restricted substance corresponds to the exemption.						



Note: 1. More details refer to User Manual, please visit: www.godexintl.com; 2. For better readability, please print this document with laser printer.

註: 1.詳細內容請參閱《使用者手冊》, 下載網址 www.godexintl.com; 2.為確保條碼品質, 請使用雷射印表機進行列印