



Label Rewinder Family

T10 / T20

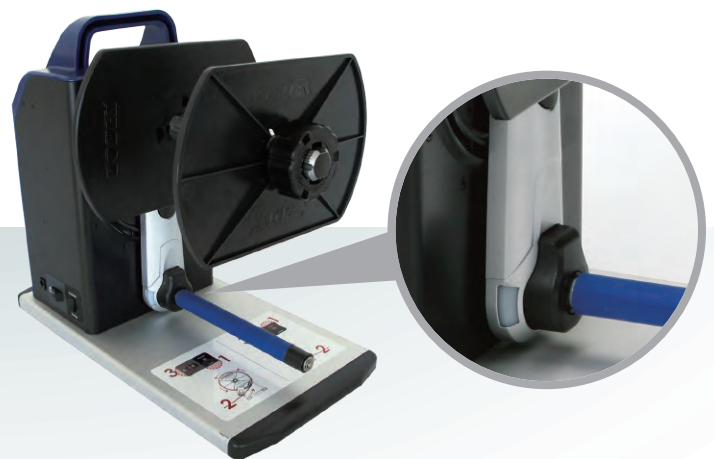
The Rewinder Everyone Can Use

The T10 / T20 rewinder has an idler arm that can be positioned to rewind labels from either side of the printer.

Depending on the user's requirements, the rewinder can rewind "inside or outside" label rolls.



VR (Speed Adjustment)



Colored LED indicator provides rewinder operation status

T10 / T20 Printer Specification

Model	T10	T20
Paper width	4.72" (Max.)	7" (Max.)
Rewind Speed	2-14 IPS	
Label Roll	8" (Max.)	6" (Max.)
Core Roll	Coreless, 1" (25.2-25.6mm), 1.5"x2 (37.4-38.0mm & 40-40.6mm), 3" (76-76.6mm)	
Label Roll Weight	5 Kg	
Rewinding	Label Inside / Outside	
Switches	Rewind	
Motor	Hybrid Motor	
Power	100-240VAC 24W, 24V Adapter	
Environment	Operating Temp : 41°F to 104°F(5°C to 40°C) Storage Temp : -4°F to 122°F(-20°C to 60°C)	
Humidity	10-85% (non-condensing RH)	
Size (H*W*D)	303mm*180mm*349mm	303mm*180mm*394mm
Agency Approvals	CE, FCC Class A, UKCA	
Weight	5 Kg (11 lb)	

* Specifications are subject to change without notice. All company and/or product names are trademarks and/or registered trademarks of their respective owners.

邁多科技 www.LAAB.com.tw 02-2389-0101

1987年成立 · 條碼機/讀碼器/貼紙/吊牌/碳帶、代理/代印生產、維修/規劃諮詢